



Ballymore RESOURCES

Discovering Queensland's  
next major

# Gold and Copper Mine

---

AGM

21 November 2024



# Disclaimer

## Cautionary Statement

Certain statements made during or in connection with this statement contain or comprise certain forward-looking statements regarding the Company's Mineral Resources, exploration operations and other economic performance and financial conditions as well as general market outlook. Although the Company believes that the expectations reflected in such forward-looking statements are reasonable, such expectations are only predictions and are subject to inherent risks and uncertainties which could cause actual values, results, performance or achievements to differ materially from those expressed, implied or projected in any forward-looking statements and no assurance can be given that such expectations will prove to have been correct.

Accordingly, results could differ materially from those set out in the forward-looking statements as a result of, among other factors, changes in economic and market conditions, delays or changes in project development, success of business and operating initiatives, changes in the regulatory environment and other government actions, fluctuations in commodity prices and exchange rates and business and operational risk management. Except for statutory liability which cannot be excluded, each of the Company, its officers, employees and advisors expressly disclaim any responsibility for the accuracy or completeness of the material contained in this statement and excludes all liability whatsoever (including in negligence) for any loss or damage which may be suffered by any person as a consequence of any information in this statement or any error or omission. The Company undertakes no obligation to update publicly or release any revisions to these forward-looking statements to reflect events or circumstances after today's date or to reflect the occurrence of unanticipated events other than as required by the Corporations Act and ASX Listing Rules. Accordingly, you should not place undue reliance on any forward-looking statement.

## Exploration Results & Exploration Target

Ballymore confirms that Exploration Results and Exploration Targets used in this document were estimated, reported and reviewed in accordance with the guidelines of the Australian Code for the Reporting of Exploration Results, Mineral Resources and Ore Reserves (The JORC Code) 2012 edition. Ballymore confirms that it is not aware of any new information or data that materially affects the Exploration Results or Exploration Target information included in the market announcements below and in the case of estimates of mineral resources or ore reserves, that all material assumptions and technical parameters underpinning the estimates in the market announcements below continue to apply and have not materially changed:

- \*1 - Ballymore Prospectus released on 1 September 2021
- \*2 - "Initial results for Dittmer underground sampling & drilling" released on 29 September 2021
- \*3 - "High grade drilling results and visible gold at Dittmer" released on 25 October 2021
- \*4 - "Ruddygore IP Survey confirms large copper target" released on 10 November 2021
- \*5 - "Acquisition of 100% of Ravenswood Project" released on 18 November 2021
- \*6 - "Seventy Mile Mount Drilling & CEI Drill Hole Completed" released on 14 December 2021
- \*7 - "Drilling Confirms Large Gold System in Ravenswood Project" released on 4 March 2022
- \*8 - "Grant of Exploration Licence over Mount Molloy Mine" released on 19 May 2022

- \*9 - "Dittmer Drilling Confirms Displaced High Grade Extension" released on 20 June 2022
- \*10 - "Broad Near Surface Copper Intersection at Ruddygore" released on 15 July 2022
- \*11 - "Assay Results Confirm Gold-Copper Discovery at Dittmer" released 19 July 2022
- \*12 - "Further Near Surface Copper Intersections at Ruddygore" released 31 August 2022
- \*13 - "Further Broad Gold Intersections at Ravenswood Project" released 29 September 2022
- \*14 - "Outstanding Results for Day Dawn Deposit, Ravenswood Project" released 5 October 2022
- \*15 - "SPP closed oversubscribed" released 22 November 2022
- \*16 - "High Grade Intersections Confirm Dittmer Orebody Extension" released 16 March 2023
- \*17 - "High grade rock chips confirm copper potential at Mount Molloy" released 20 March 2023
- \*18 - "New bonanza gold grades validate planned Dittmer Mine reopening study" released 2 May 2023
- \*19 - "Dittmer Mine Studies Underway Following Further Positive Drill Results" released 4 July 2023
- \*20 - "Outstanding Gold in Soils Confirm Dittmer Project as Major Mineralised System" released 16 October 2023
- \*21 - "Dittmer metallurgical testwork confirms excellent gold, silver and copper recoveries" released 23 October 2023
- \*22 - "Soil Sampling Extends Ruddygore Near Surface Copper Target By Over 2km" released 6 November 2023
- \*23 - "Ballymore awarded \$600K in CEI Funding" released 25 March 2024
- \*24 - "Dittmer Stage 4 Drilling Delivers Further High-Grade Gold Results " released 2 April 2024
- \*25 - "Dittmer Stage 4 drilling doubles known gold/copper mineralisation area" released 16 April 2024
- \*26 - "Dittmer Stage 4 Drilling Delivers 193 g/t Au Intersection" released 9 May 2024
- \*27 - "Final Dittmer Stage 4 assays confirm extension of high-grade mineralization" released 5 June 2024
- \*28 - "Drill results extend Dittmer mineralised zone. Duffer lode rock chips deliver bonanza results up to 807 g/t Au" released 19 September 2024
- \*29 - "Magnetic survey identifies significant new gold-copper target underneath high-grade Dittmer mineralization" released 8 October 2024

## Competent Person Statement

The information in this announcement that relates to Exploration Results is based on information compiled or reviewed by Mr David A-Izzeddin. The Company is not aware of any new information or data that materially affects the information included in these Company Announcements and in the case of reported Mineral Resources, all material assumptions and technical parameters underpinning the estimates continue to apply and have not materially changed. Mr A-Izzeddin is a Member of The Australasian Institute of Geoscientists and is an employee of the Company. Mr A-Izzeddin has sufficient experience which is relevant to the style of mineralisation and type of deposit under consideration and to the activity which he is undertaking to qualify as a Competent Person as defined in the 2012 Edition of the 'Australasian Code for Reporting of Exploration Results, Mineral Resources and Ore Reserves'. Mr A-Izzeddin consents to the inclusion in the announcement of the matters based on his information in the form and context in which it applies. The Exploration Targets described in this announcement are conceptual in nature and there is insufficient information to establish whether further exploration will result in the determination of Mineral Resources.

# Corporate snapshot

Share price

## A\$0.14c

As at 20 November 2024  
52 week high \$0.22, low \$0.09

Market capitalisation

## A\$24.74m

As at 20 November 2024

Shares on issue

## 176.7m

As at 20 November 2024

Cash

## A\$5.9m

As at 30 September 2024

Enterprise Value

## A\$18.84m

As at 20 November 2024

Director's Ownership

## 32%

\$11.1 million of funds raised, including \$7.5 million directly on Dittmer via Taurus Royalty funding.

Gold price (USD/oz)\*

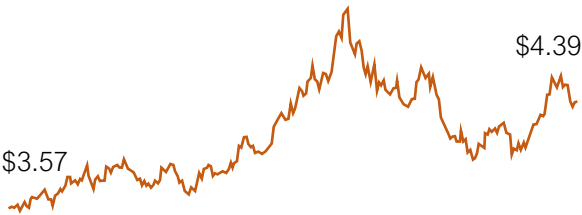
12 months to 11 October 2024



\*Source: tradingeconomics.com

Copper price (USD/lbs)\*

12 months to 11 October 2024



ASX Share price performance (\$A)

Year to 11 October 2024



# Project Location



# Project Location



# Dittmer Project

Near term production path with large footprint of workings never drilled.

Exploring around one of the highest-grade gold mines in Queensland.

Large system relatively unexplored

- Similarities with Ravenswood IRGS mineralisation (4.8Moz Au) – currently Queensland’s largest gold mine.
- Three granted EPMs and two granted Mining Leases.

Average gold grades

**151.1g/t**

Average silver grades

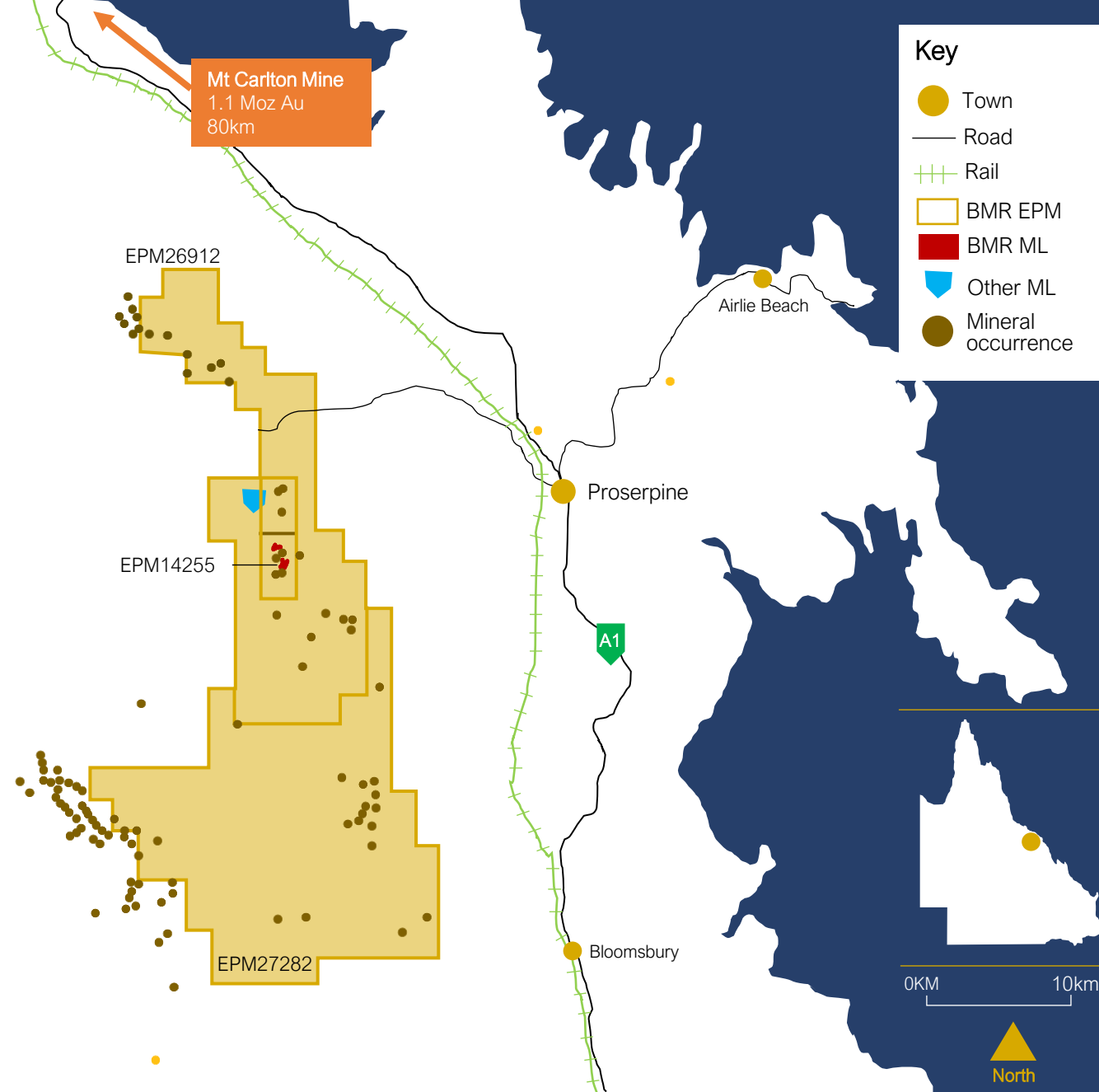
**66.8g/t**

Gold production to 1951

**54,000oz**

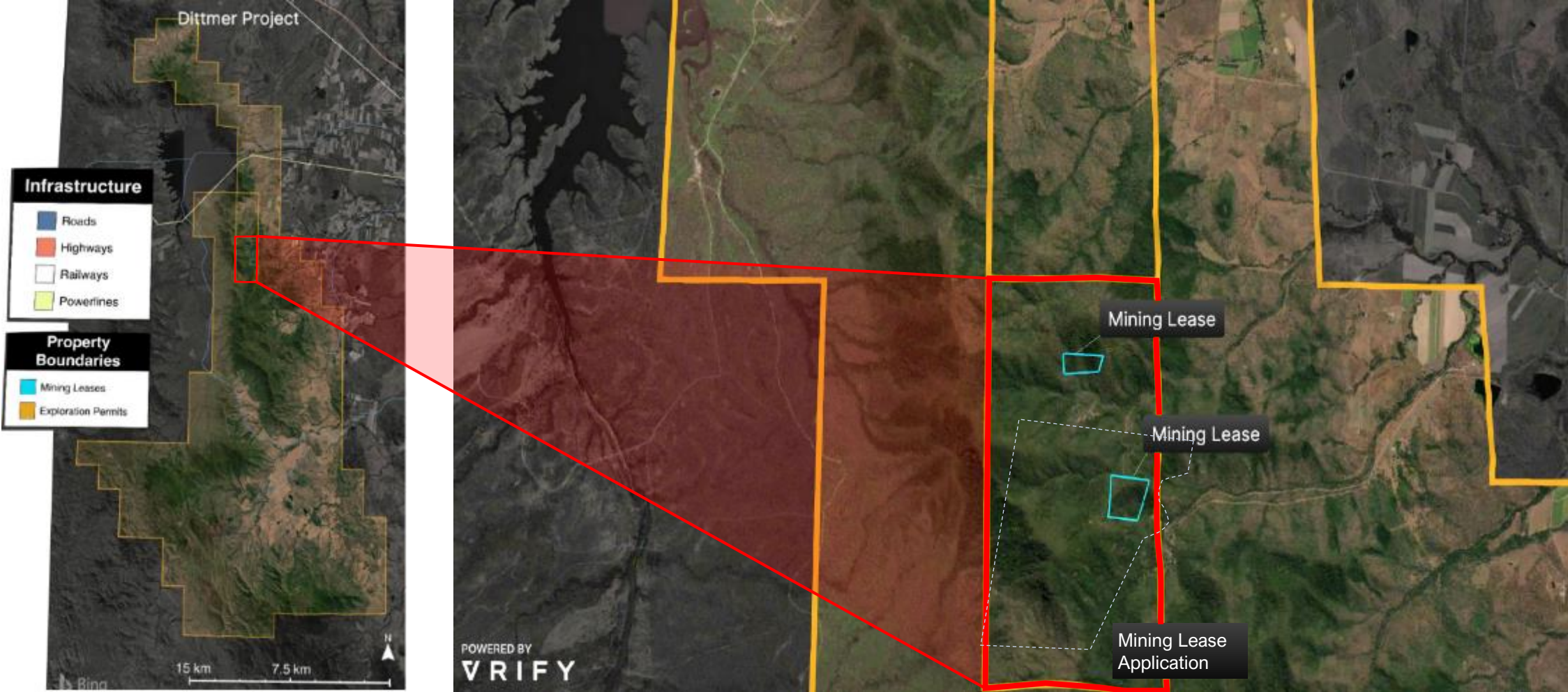
Average copper grades

**2.8%**



# Dittmer Project

Two Granted Mining Leases, Mining Lease Application & over 500km<sup>2</sup> of Exploration Licences



# Dittmer Project

## Re-Opened Historic Mine

Access to the underground mine has allowed mapping, sampling and drilling shorter holes all year round

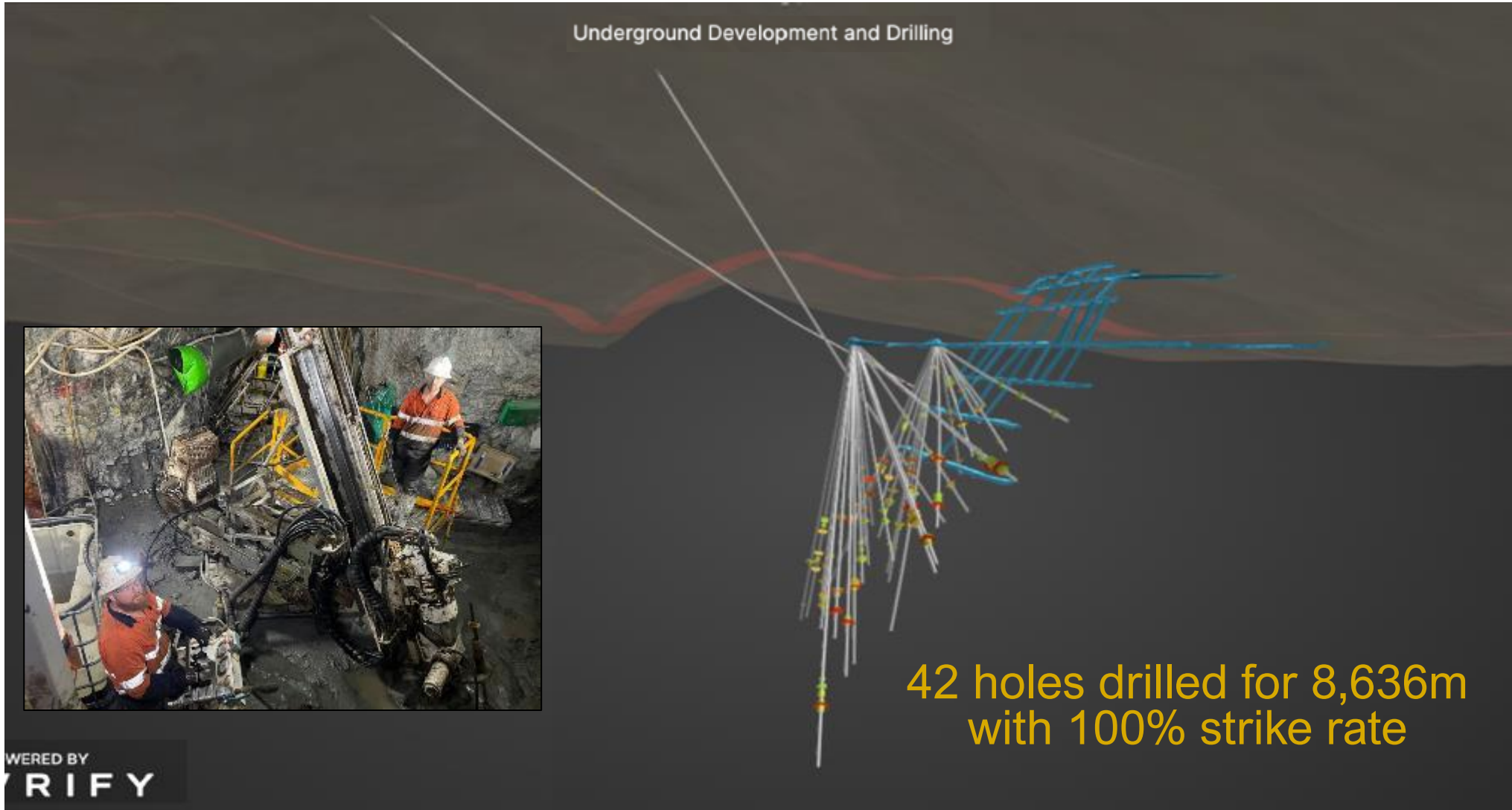




# Dittmer Project

## Underground Development & Drilling

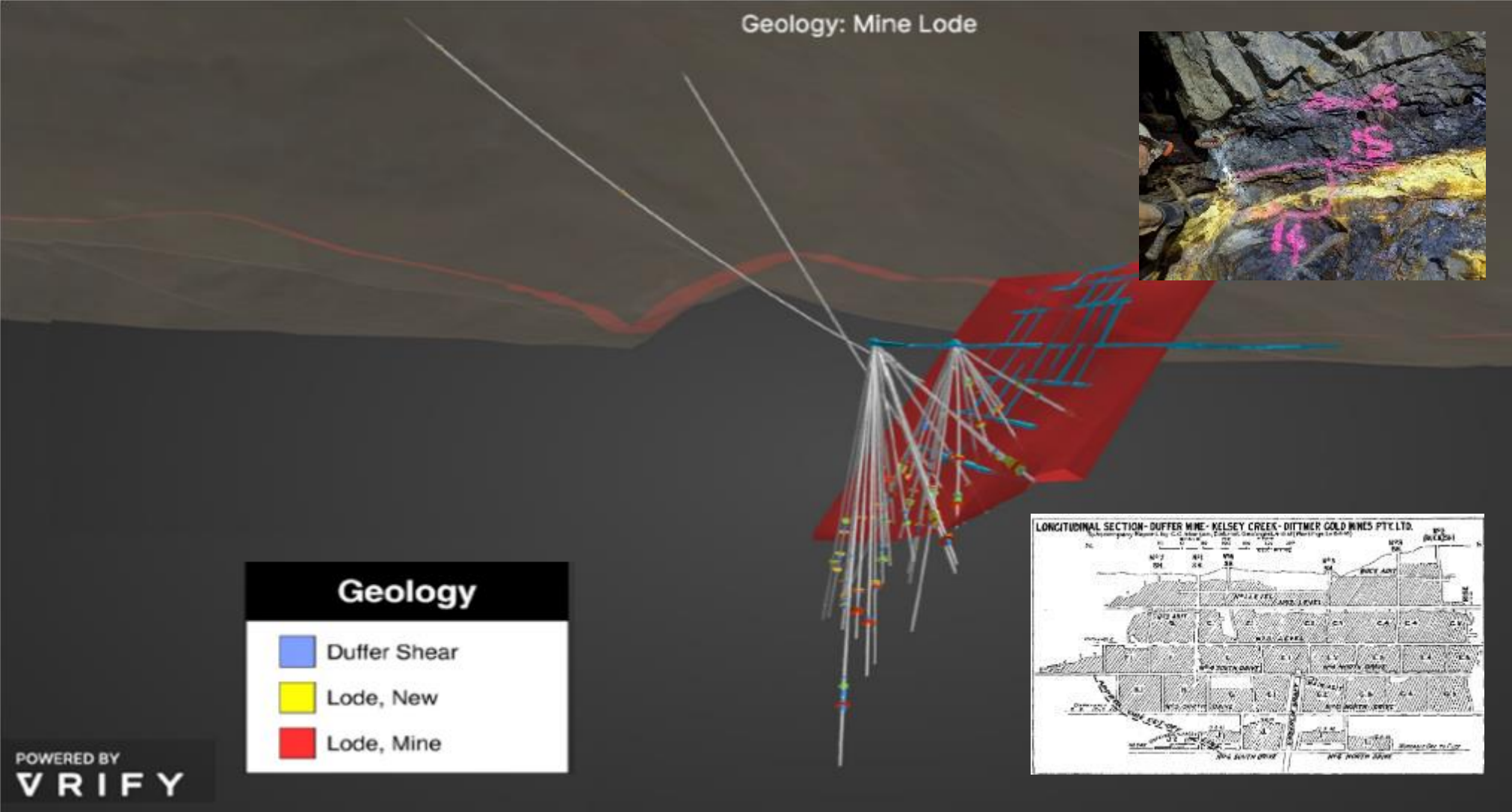
Dittmer mine never drilled  
prior to BMR in 2021



# Dittmer Project

## Mine Lode

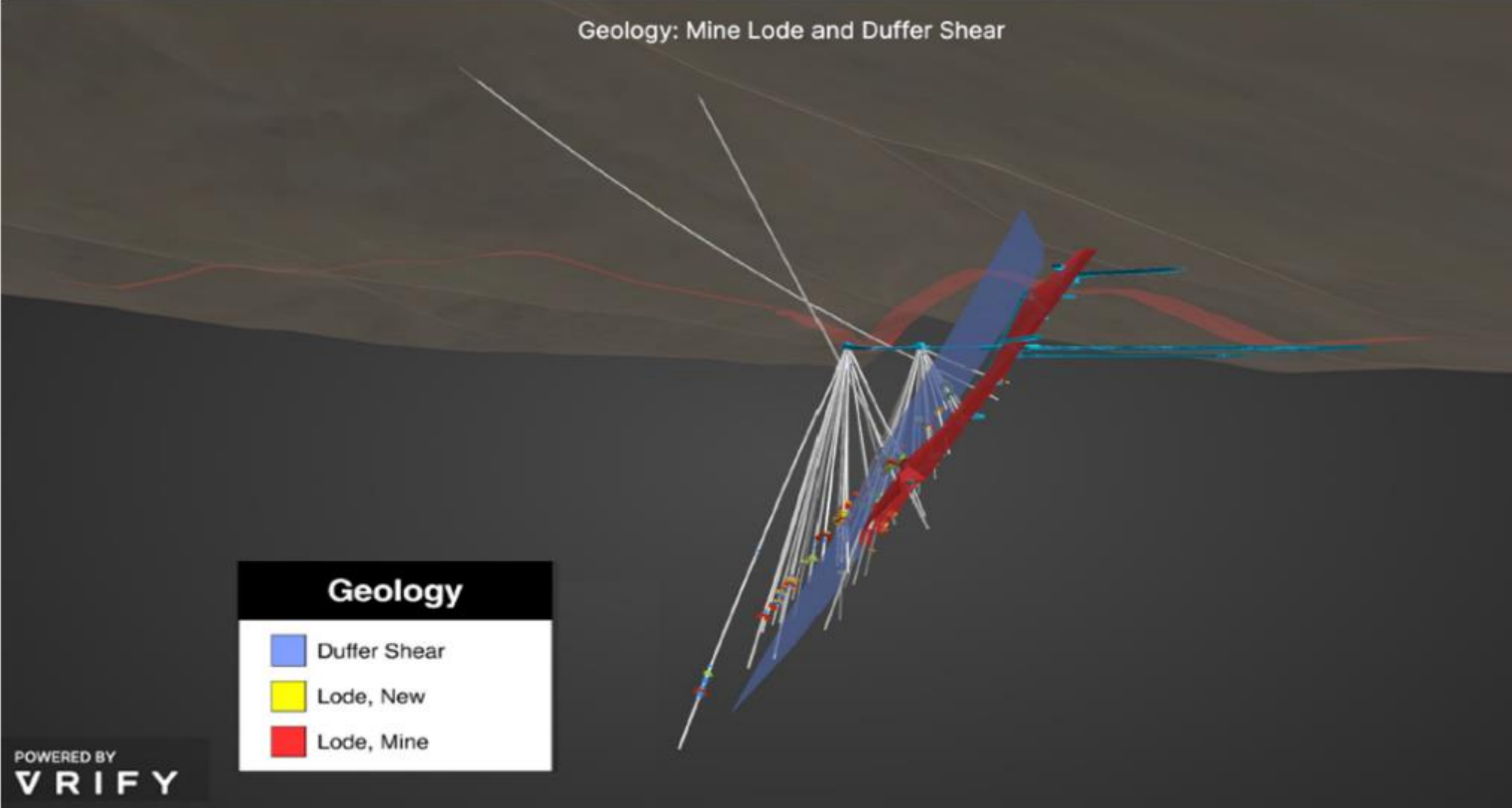
Mine Lode historically produced 55,000oz Au @ 151 g/t Au



# Dittmer Project

## Mine Lode & Duffer Shear

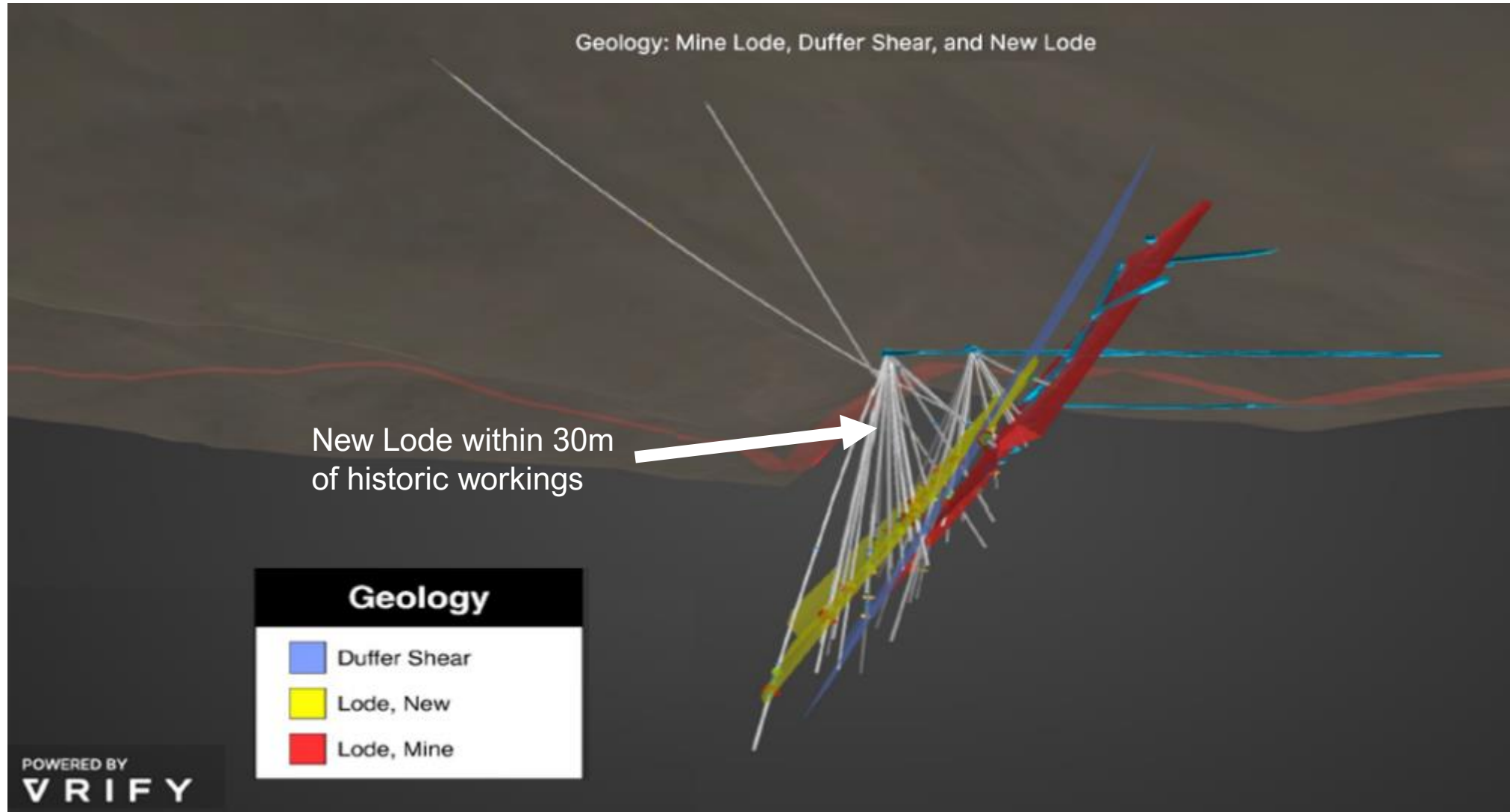
Historic Mine Lode displaced  
200m below surface



# Dittmer Project

Mine Lode, Duffer Shear & New Lode

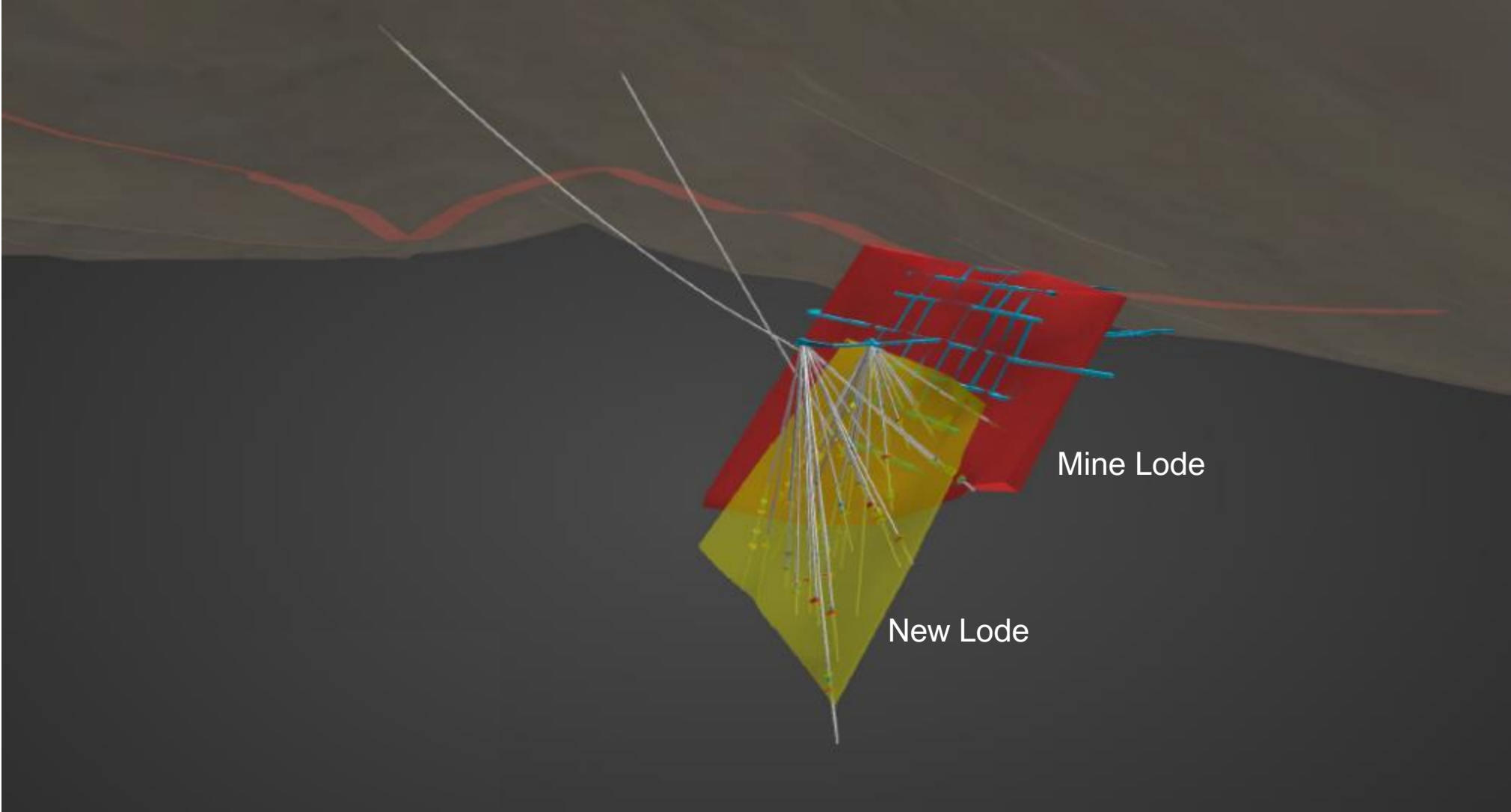
Repetition of bonanza-grade Mine Lode recognised 30m from mine workings



# Dittmer Project

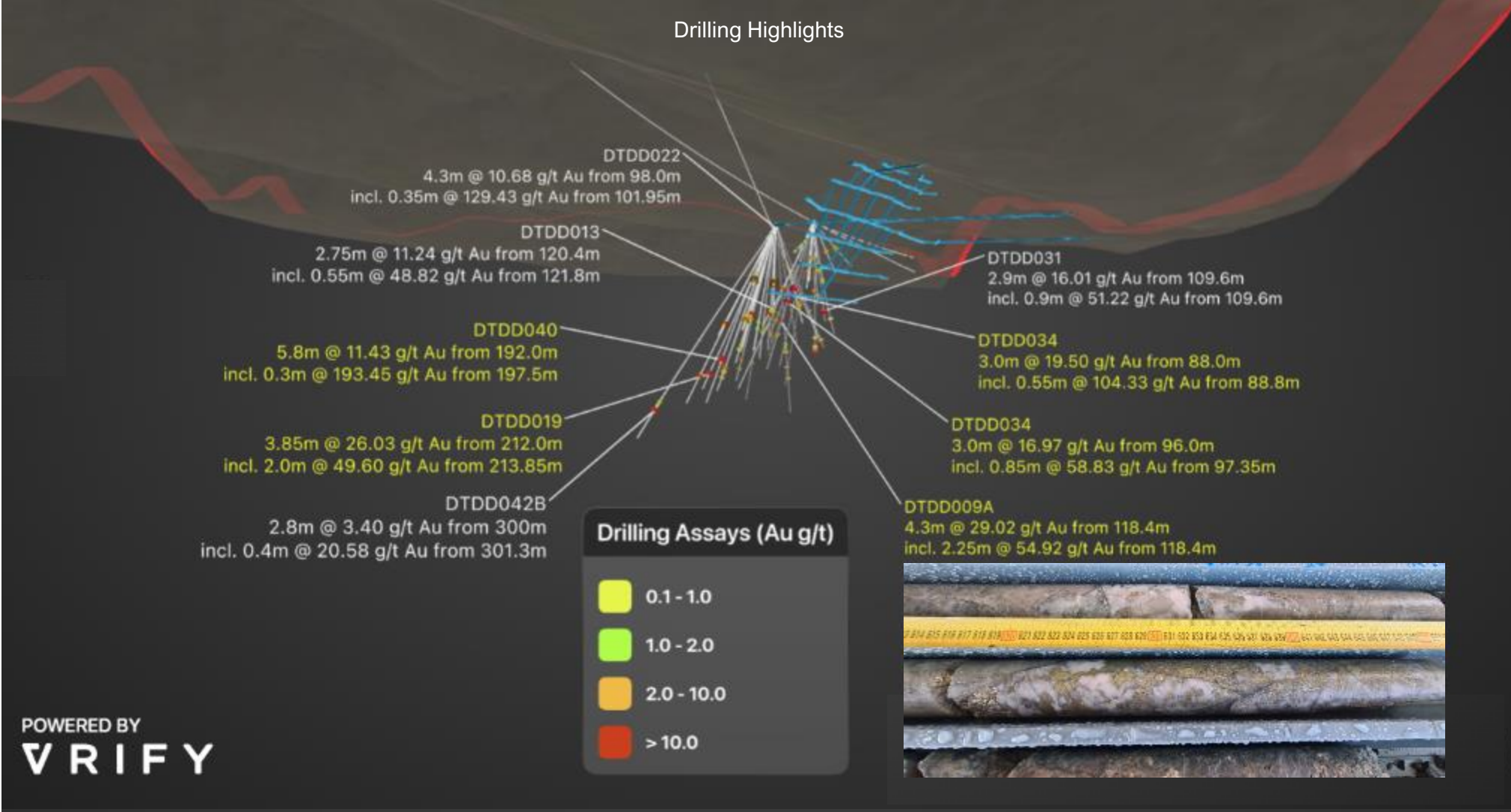
## Mine Lode & New Lode

Oblique view



# Dittmer Project

## Drilling Highlights



# Dittmer Project

## 2024 in Review

- Stage 4 UG diamond drilling program
- Dittmer Surface drilling program
- Cedar Ridge RC drilling program
- Dittmer regional magnetic & radiometric survey
- Soil sampling & prospecting
- Metallurgical testwork (in progress)
- Advancing ML application



# Dittmer Project

## Stage 4 drilling

Completed in May 2024 and delivered further high-grade drill assay results

### High-grade gold intersections include:

**DTDD031:** 2.9m @ 16.01 g/t Au including 0.9m @ **51.21** g/t Au\*

**DTDD032:** 3.15m @ 8.99 g/t Au including 0.35m @ **79.32** g/t Au\*

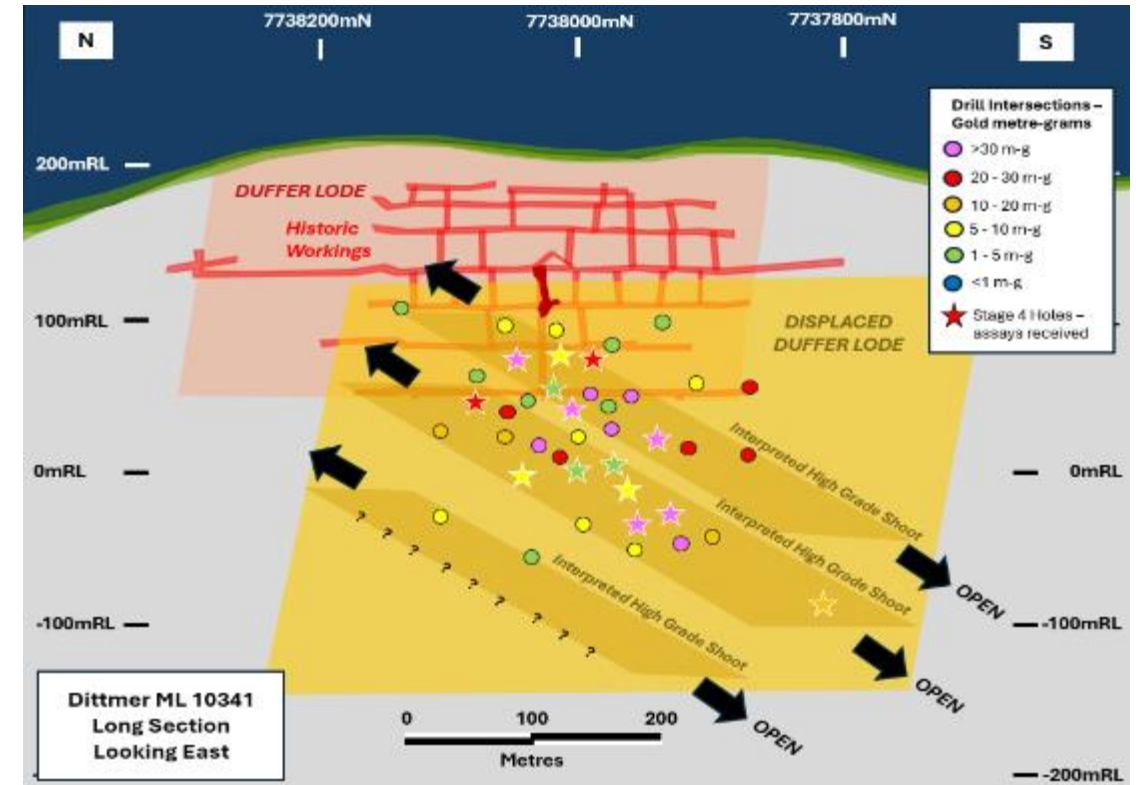
**DTDD033:** 1.80m @ 12.85 g/t Au including 1.2m @ 19.13 g/t Au including 0.4m @ **54.64** g/t Au\*

**DTDD034:** 3.0m @ 19.50 g/t Au including 1.2m @ **48.25** g/t Au and also 3.0m @ 16.97 g/t Au including 0.85m @ **58.83** g/t Au\*\*

**DTDD039:** 5.1m @ 7.07 g/t Au including 2.1m @ 16.80 g/t Au including 0.3m @ **89.96** g/t Au\*\*

**DTDD040:** 8.0m @ 8.35 g/t Au including 4.8m @ 13.68 g/t Au including 0.3m @ **193.45** g/t Au\*\*

\* "Dittmer Stage 4 Drilling Delivers Further High-Grade Gold Results " released 2 April 2024  
\*\* "Dittmer Stage 4 Drilling Delivers 193 g/t Au Intersection" released 9 May 2024





# Dittmer Project

## Regional Potential

Surface drilling program targeting this major system

Major mineralised system identified in Dittmer area with only limited exploration and drilling completed.

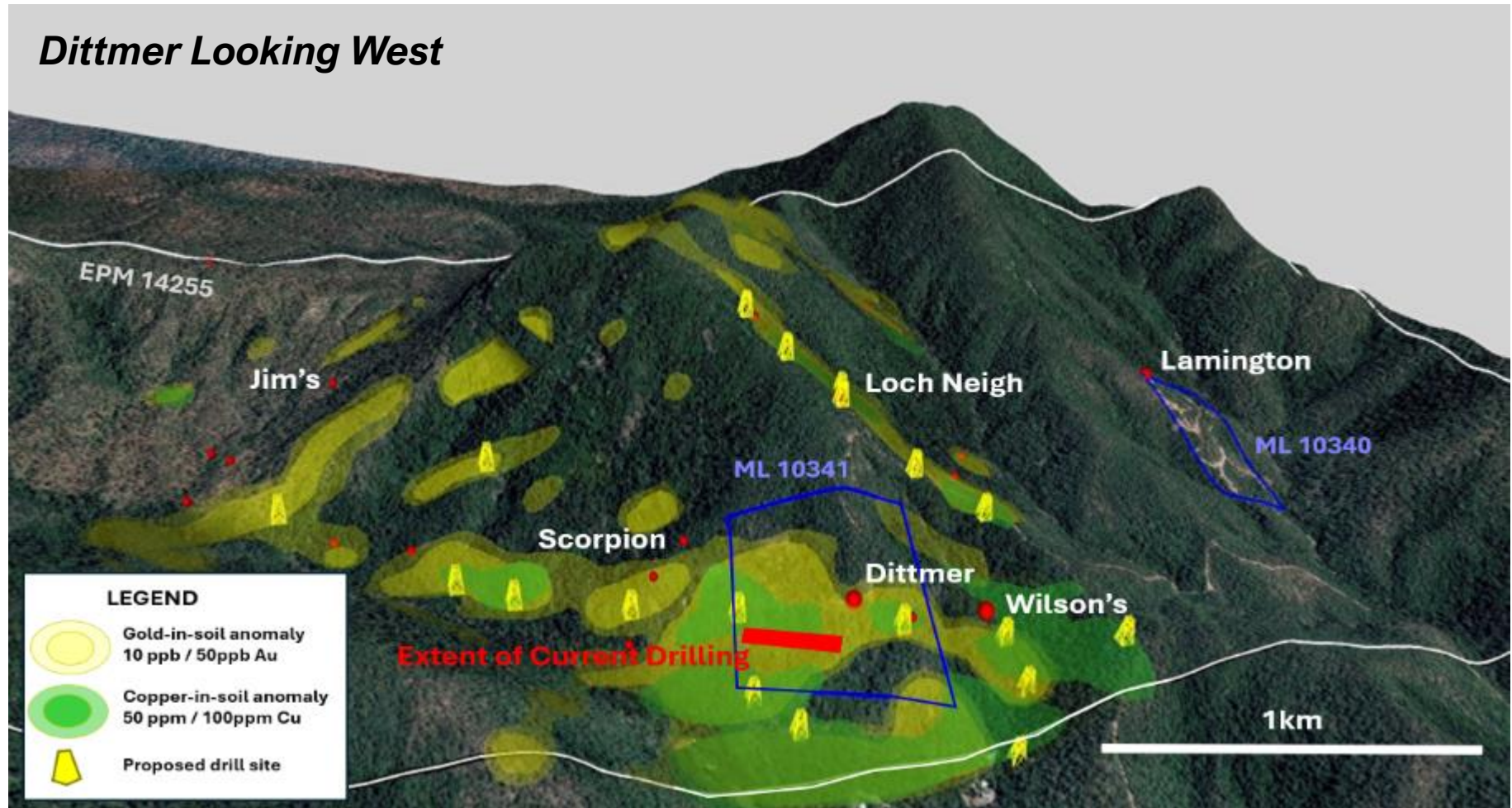
2km of other shallow historic workings.

Work completed by BMR:

Extensive copper-gold soil anomaly defined\*.

First major surface drilling program testing priority targets – results pending

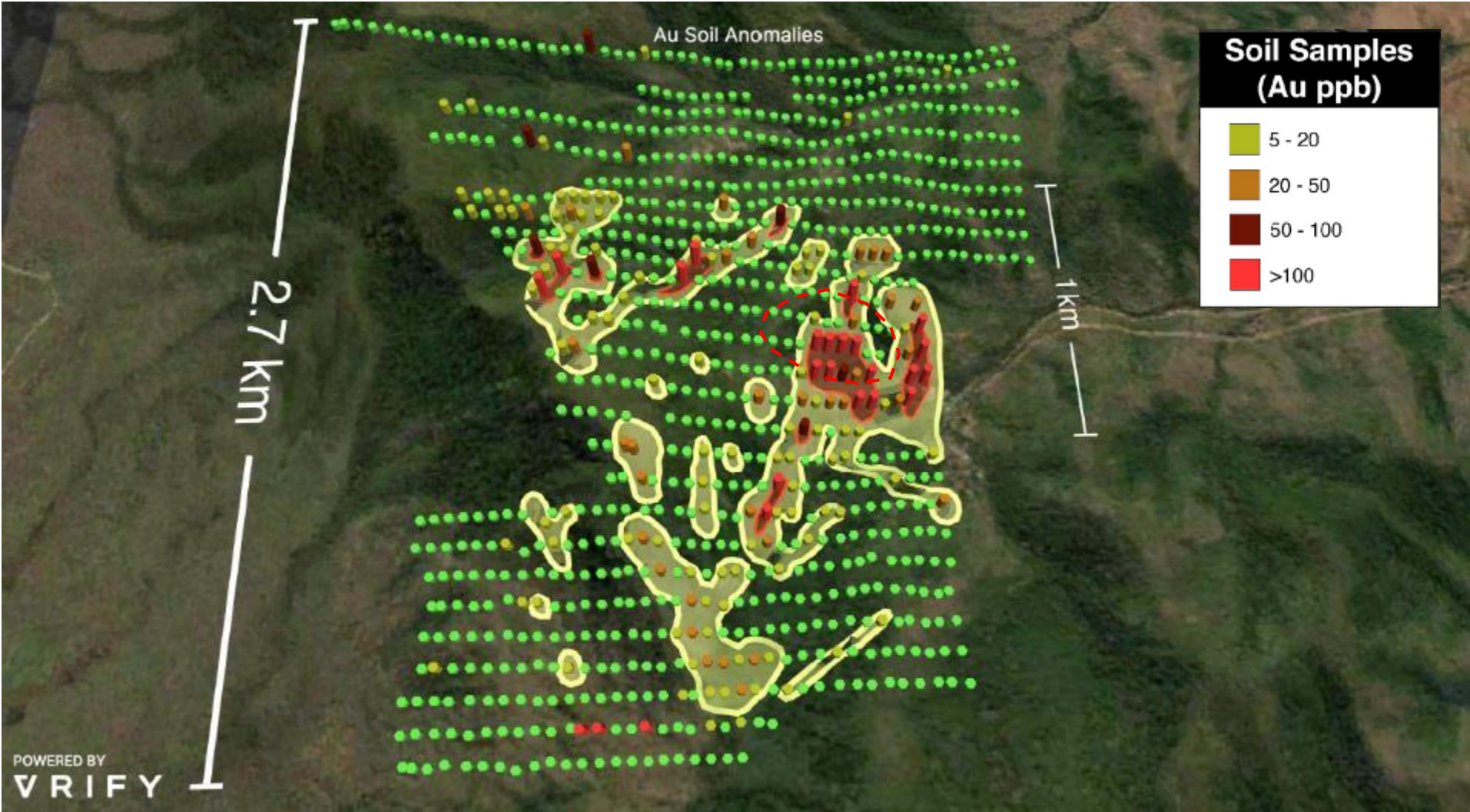
\* "Outstanding Gold in Soils Confirm Dittmer Project as Major Mineralised System" released 16 October 2023



# Dittmer Project

## Soil Geochemistry - Gold

Extensive gold anomalies extending for up to 2km



# Dittmer Project

## Soil Geochemistry - Copper

Significant copper anomaly adjacent to Dittmer mine – possible underlying porphyry copper system



# Dittmer Project

## Rock Chip Geochemistry – Bonanza Gold\*

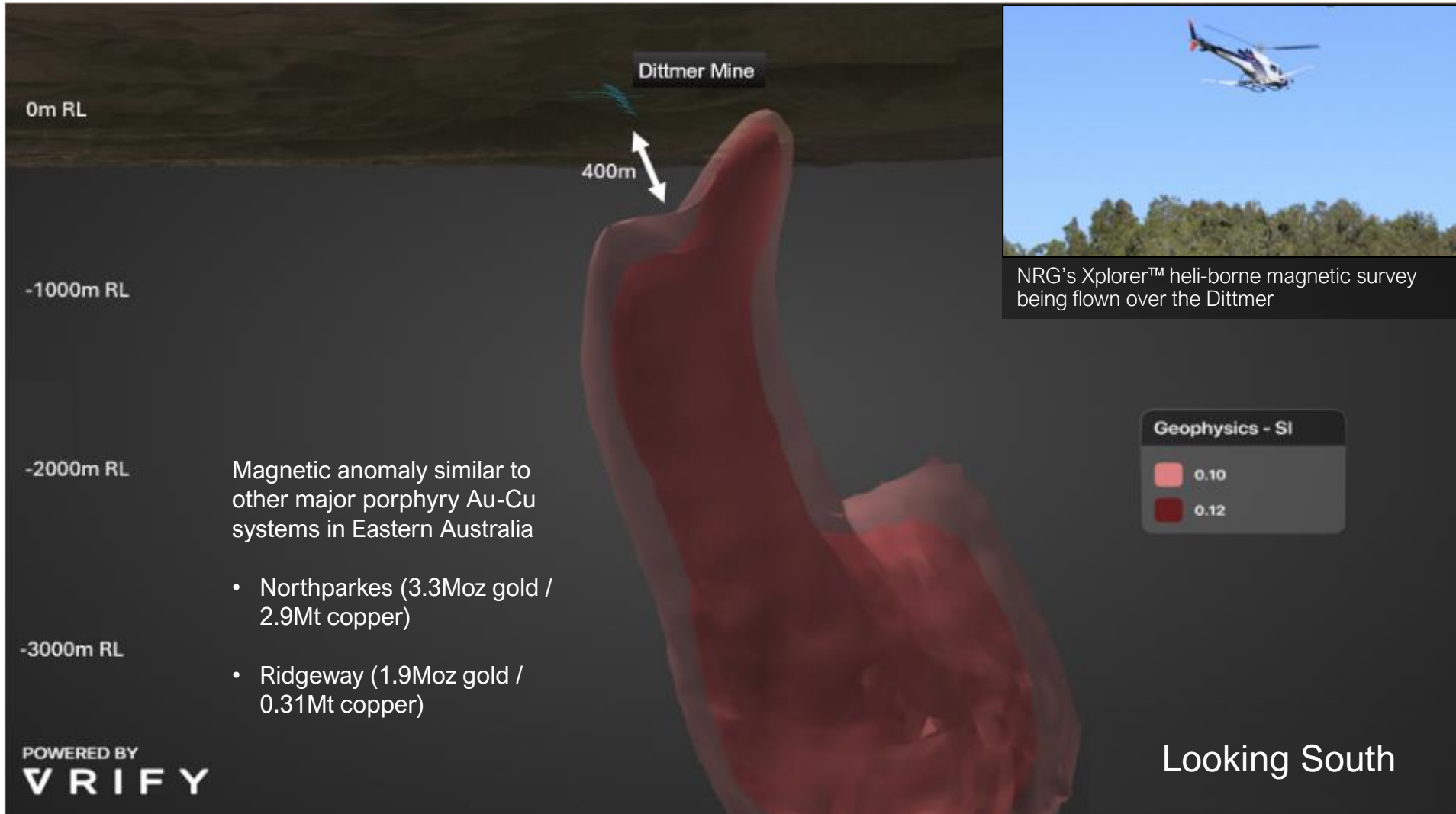


\* “Drill results extend Dittmer mineralised zone. Duffer lode rock chips deliver bonanza results up to 807 g/t Au” released 19 September 2024

# Dittmer Project

## Magnetic Model

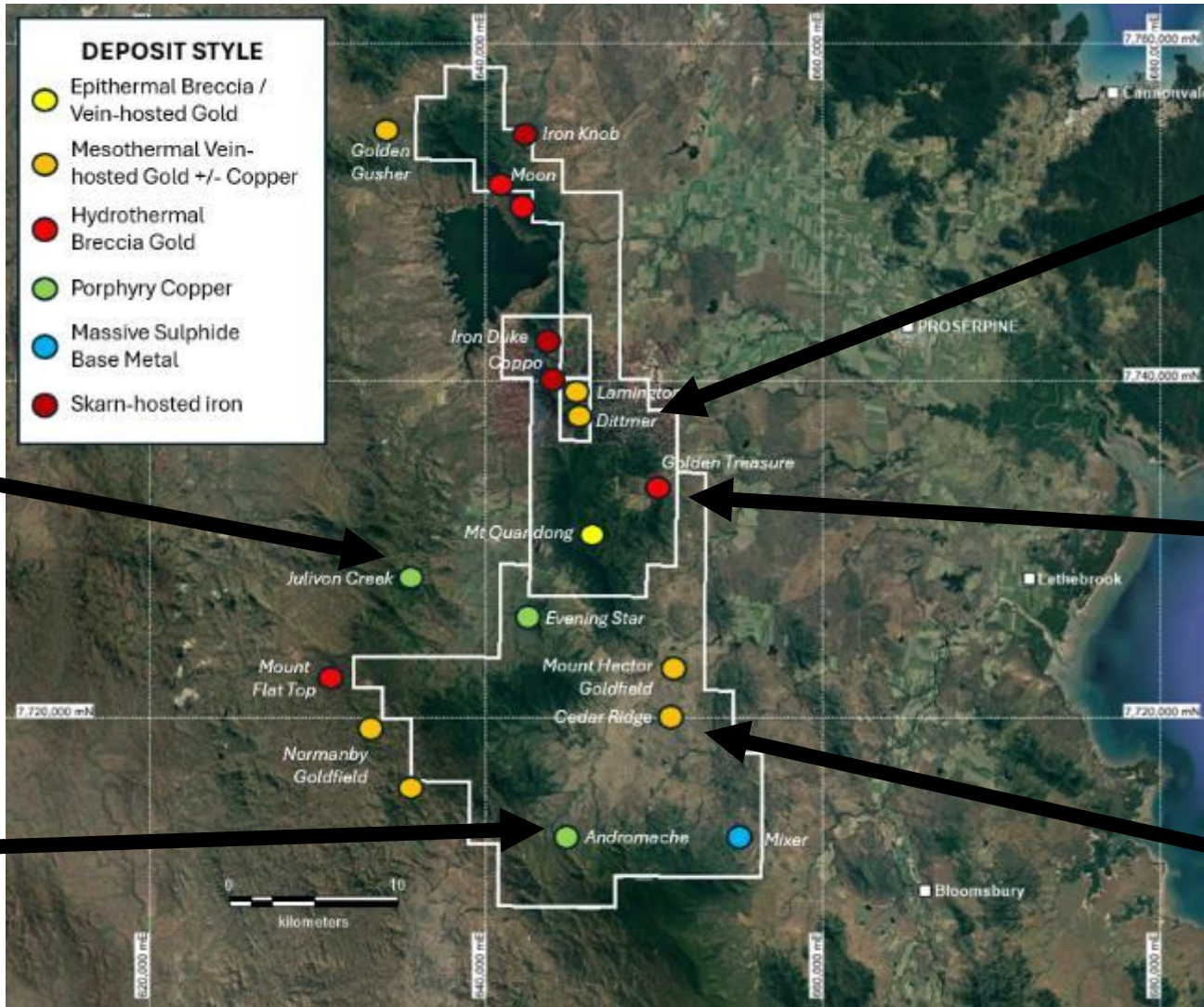
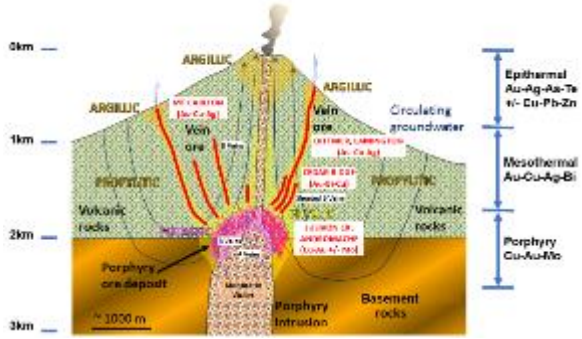
Major 1,200m x 800m pipelike magnetic body 400m beneath Dittmer mine\*



\* "Magnetic survey identifies significant new gold-copper target underneath high-grade Dittmer mineralization" released 8 October 2024

# Dittmer Project

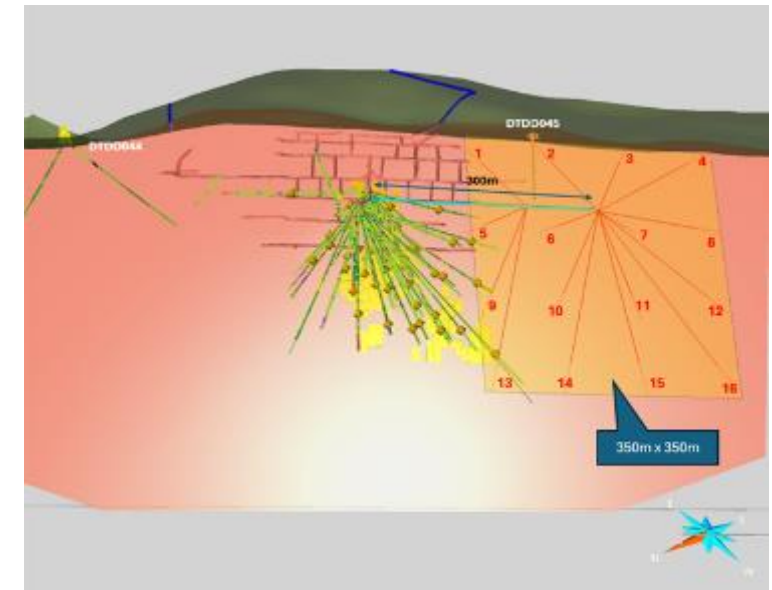
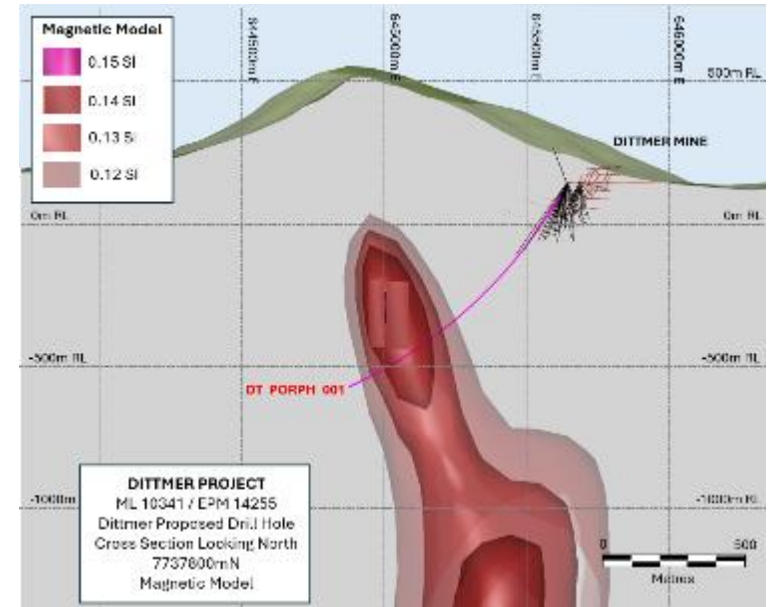
A range of different deposit styles



# Dittmer Project

## Next Steps

- Receive assay results for Cedar Ridge RC program and Dittmer surface drilling results
- Regional review of new magnetic / radiometric datasets
- Preparations underway to drill Dittmer porphyry target in Q1 2025
- Step-out drilling of Dittmer mine area
- Mine studies and metallurgical testwork underway at Dittmer



# Ruddygore Project

Targeting major gold and base metal deposits.

## Prolific historic mining district

- Project lies in the same mineralised corridor as Red Dome & Mungana mines (3.2Moz Au).

## Major historic mines within Ruddygore Project:

- Ruddygore** – major shallow, copper system with historic workings (5km x 2km)
- Maniopota** – lead-zinc-copper-gold target over 6.5km strike

BRURD002:

**86m @ 0.47% Cu\***

and 11g/t Ag from 4m inc  
14m @ 0.90% Cu

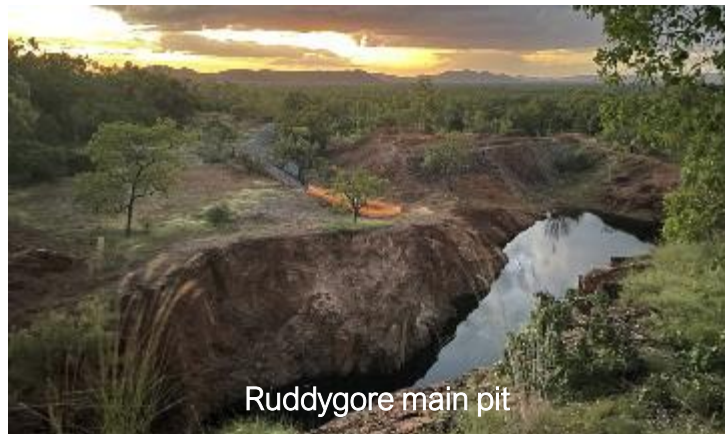
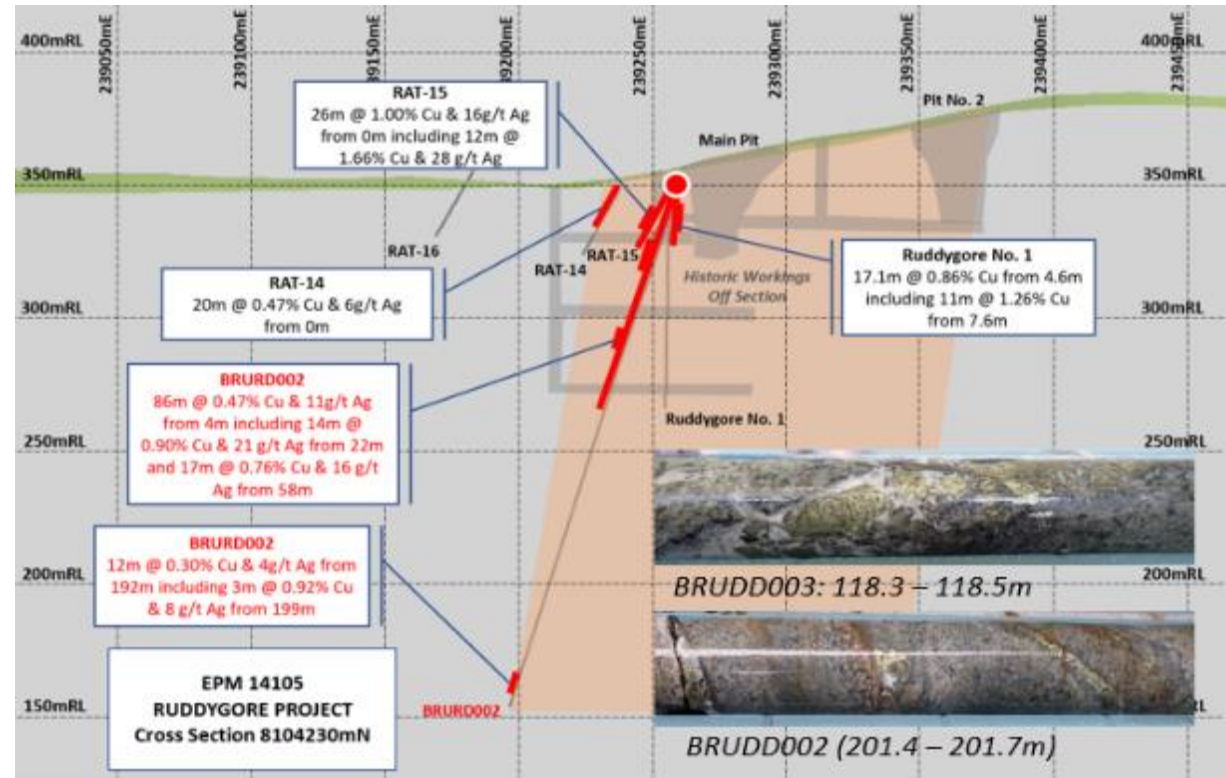
BRURD004:

**19m @ 0.41% Cu\*\***

and 12.5g/t Ag from 1m inc 3m  
@ 0.81% Cu & 18.8g/t Ag

\* "Broad Near Surface Copper Intersection at Ruddygore" released on 15 July 2022

\*\* "Further Near Surface Copper Intersections at Ruddygore" released 31 August 2022



Ruddygore main pit



Maniopota SkyTEM Survey



# Mt Molloy Project

Under-explored copper VHMS belt.

Sampling confirms significant copper system over 3km long corridor

- High-grade copper-zinc-silver mineralisation.

Sampling of the mineralised horizon has reported significant high-grade copper results\* including:

- MM018: 31.81% Cu, 300 g/t Ag, 2.28% Zn
- MM007: 26.56% Cu, 188 g/t Ag
- MM014: 25.48% Cu, 25 g/t Ag
- MM003: 24.36% Cu, 190 g/t Ag
- MM004: 23.11% Cu, 23 g/t Ag
- MM017: 21.19% Cu, 79 g/t Ag

Major copper soil anomaly open along strike

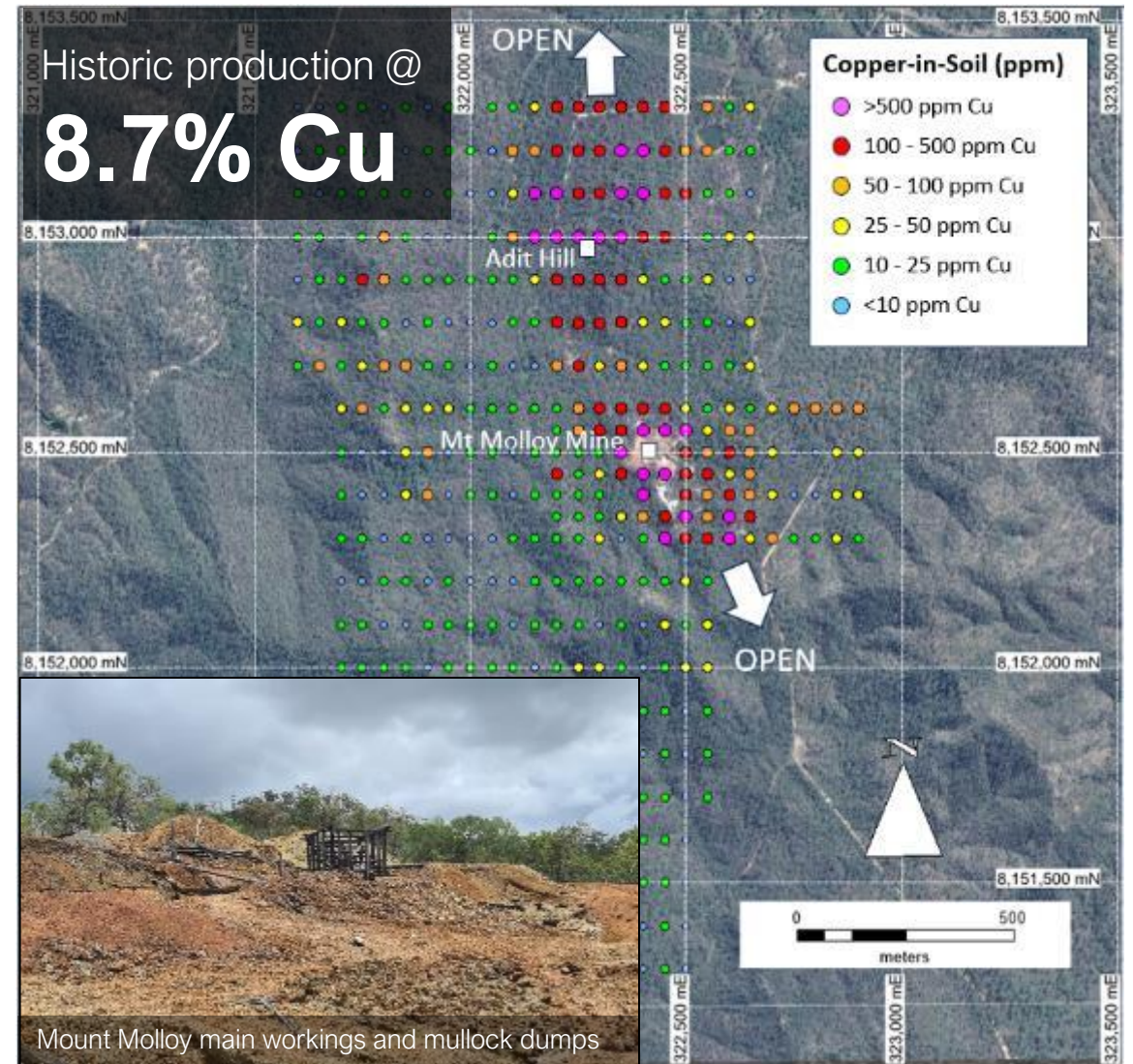
\* "High grade rock chips confirm copper potential at Mount Molloy" released 20 March 2023

50km north-west of Cairns, Queensland

Acreage 78km<sup>2</sup>



Mount Molloy Rock Chip MM018  
31.81% Cu, 300 g/t Ag & 2.28% Zn



Mount Molloy main workings and mullock dumps

# Ravenswood Project

Drill-ready targets in 17Moz gold province.

Geological similarities to the nearby Mount Leyshon (3.5 Moz Au), Ravenswood (4.9 Moz Au) & Mount Wright mines (1.0 Moz Au).

Outstanding results reported:

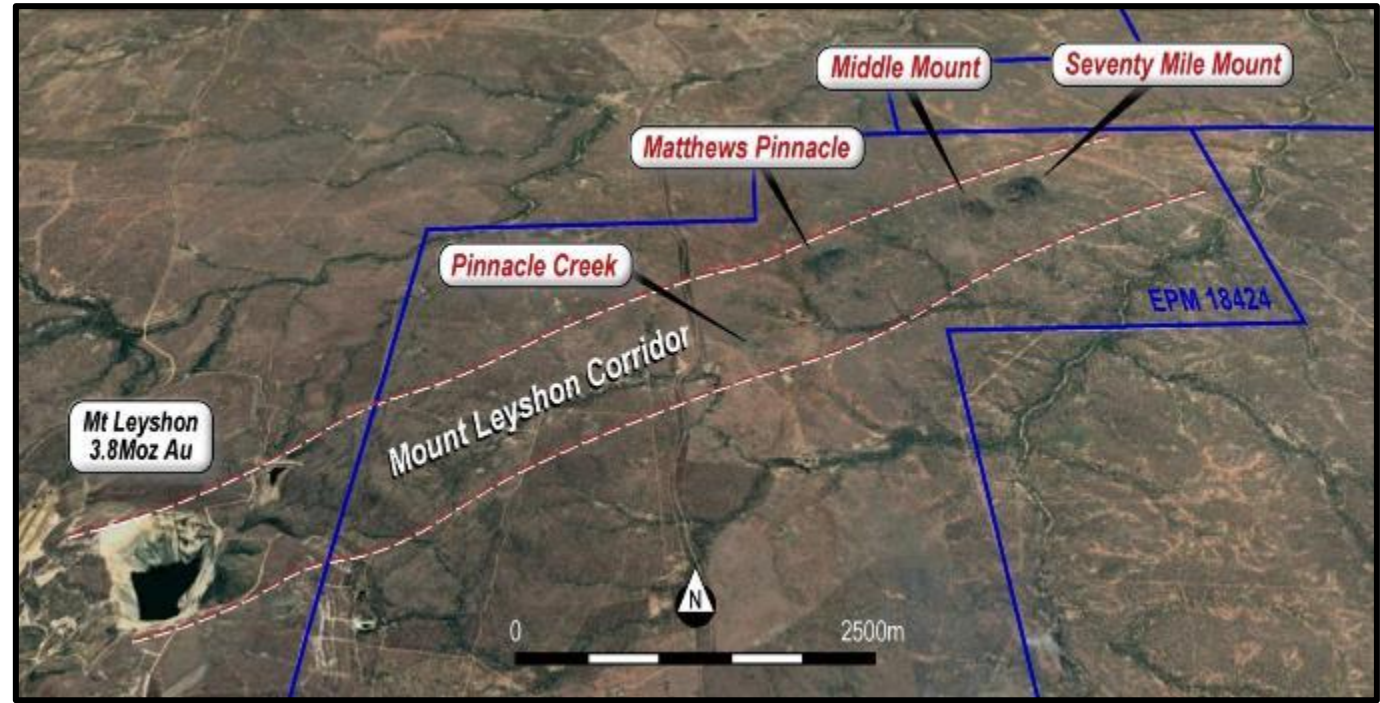
- **Seventy Mile Mount** – 40m @ 1.06 g/t Au from 46m\*
- **Pinnacle** – largest geochemical anomaly in region adjacent to Mount Leyshon (5km x 4km)
- **Day Dawn** – bonanza gold-silver system along Mount Leyshon Corridor\*\*. Drill results pending

Bonanza rock chip results up to:

**582.8 g/t Au**      **7,100g/t Ag**

Pinnacle Creek

Day Dawn



Pinnacle Creek mineralisation:  
304g/t Au, 110g/t Ag



Seventy Mile Mount mineralisation:



Day Dawn mineralisation:  
50.3g/t Au, 7100g/t Ag, 9.4% Pb

\* "Drilling Confirms Large Gold System in Ravenswood Project" released on 4 March 2022

\*\* "Outstanding Results for Day Dawn Deposit, Ravenswood Project" released 5 October 2022

# Collaborative Exploration Initiative (CEI) Grants

A\$300,000 to conduct low level heli-borne gradient Magnetic and Radiometric survey over the entire Dittmer project area – completed June 2024.



# Ballymore awarded two grants totalling A\$600,000\*

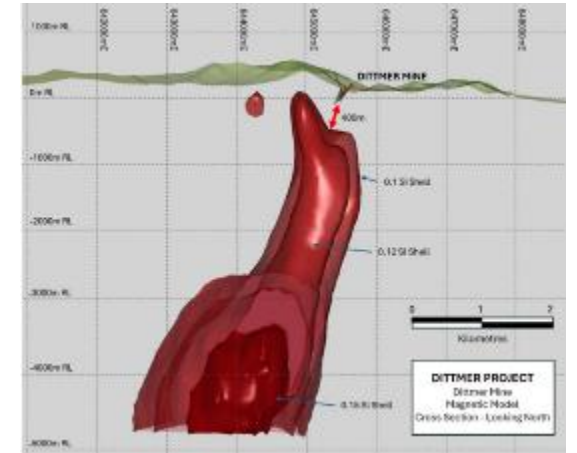
A\$300,000 to conduct a heli-borne electro-magnetic survey (AEM) at Maniopota prospect – completed August 2024.



\* "Ballymore awarded \$600K in CEI Funding" released 25 March 2024

# A successful start. An exciting future.

- Highly active explorer reinvigorating key historic projects
- Four quality projects in Queensland's best mining districts with gold, copper and other critical minerals
- Well funded
- Highly successful 2024 field program
- Aggressive work program planned for Dittmer:
  - Drill Dittmer porphyry target
  - Step-out drilling of Dittmer mine area
  - Dittmer mine studies
- Also advancing other exciting projects
- Good news flow expected from across the portfolio





**David A-Izzeddin**  
Managing Director

daizzeddin@ballymoreres.com  
+61 7 3212 6299



Join the conversation  
[twitter.com/BallymoreRes](https://twitter.com/BallymoreRes)



Follow us  
[https://www.linkedin.com/  
company/ballymore-  
resources-pty-ltd](https://www.linkedin.com/company/ballymore-resources-pty-ltd)



Subscribe to our e-news:  
[ballymoreresources.com](https://ballymoreresources.com)